

## Wireless User Guide – Windows Vista

### **IT Support Services**

College Square East, Room A22k

Extension 5085

<http://www.BelfastMet.ac.uk/Wireless>

This document provides a description on how to setup your laptop to connect to Belfast Metropolitan College's wireless network "BMC-WN-BASIC".

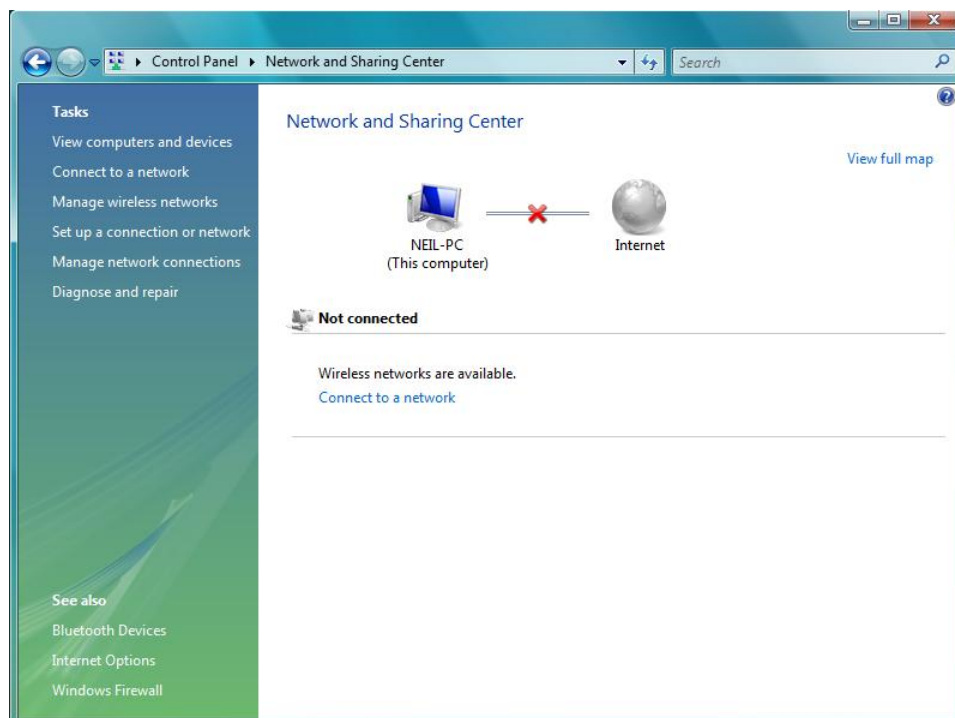
To connect to BMC-WN-BASIC you will need a laptop which meets the wireless requirements. Go to <http://www.BelfastMet.ac.uk/Wireless> for details.

### Connecting to BMC-WN-BASIC

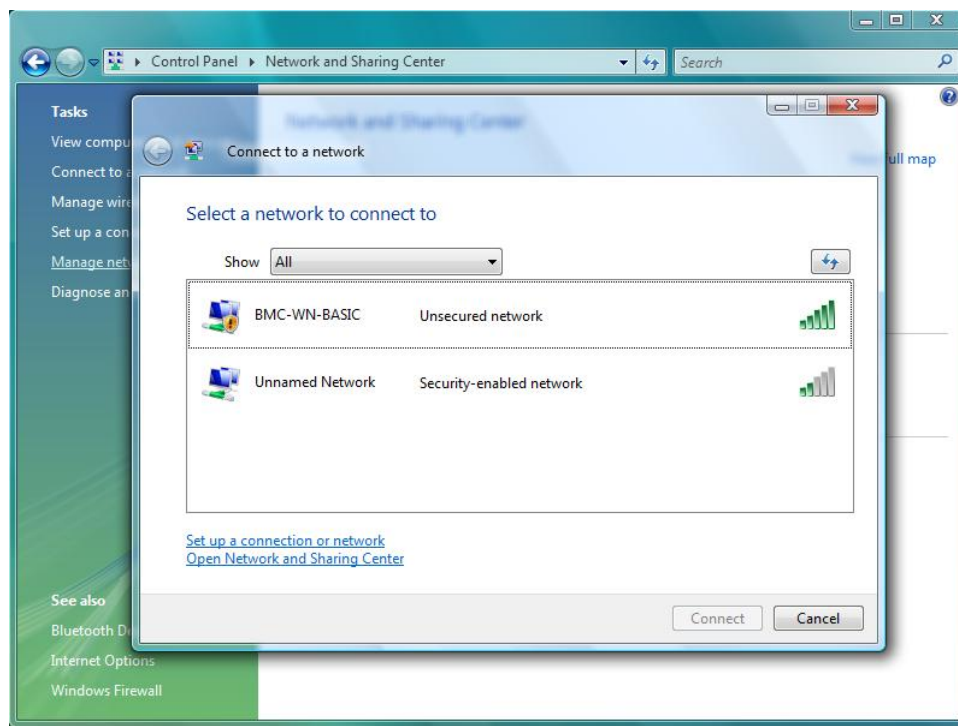
Ensure your wireless card radio is turned on.

### Windows Vista

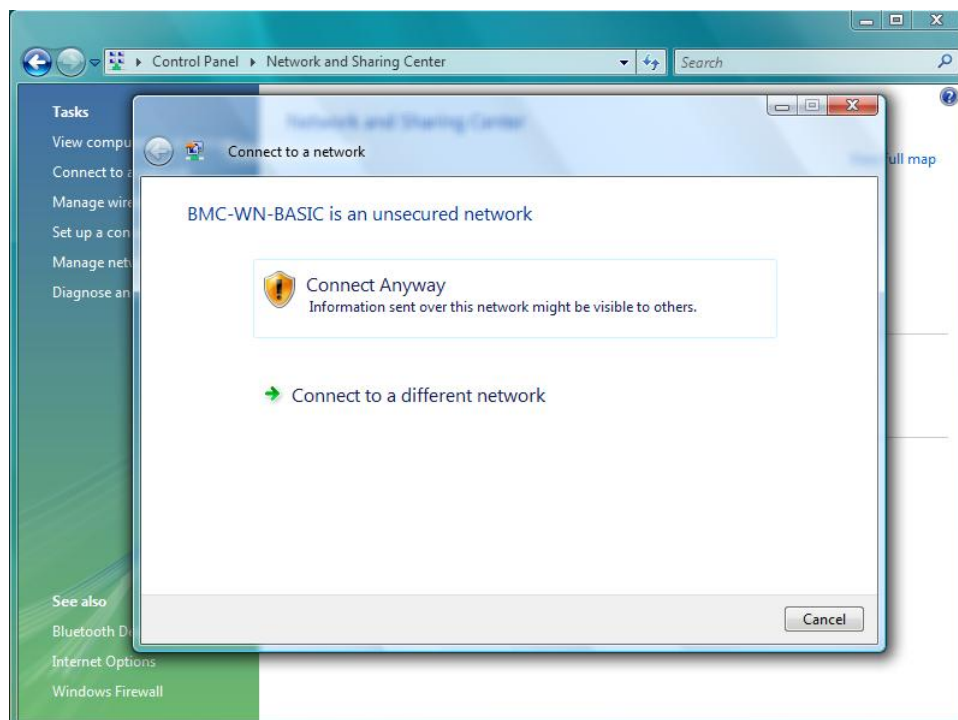
Open the Network and Sharing Centre which can be found in the Control Panel (*Start>Control Panel*) the following dialogue box will appear.



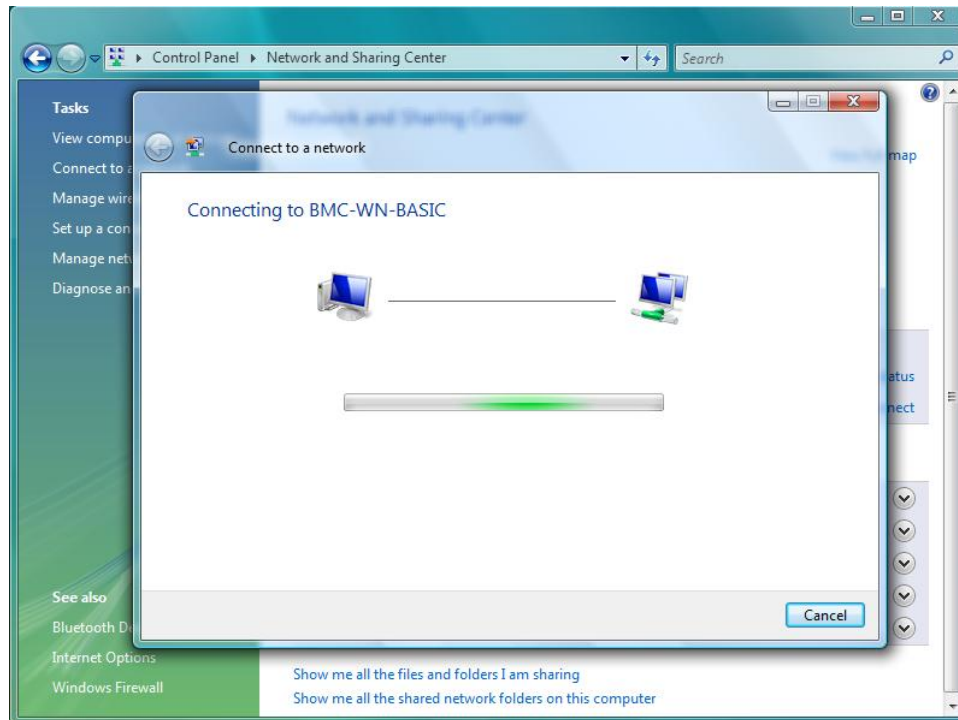
Click onto *Connect to a Network* – the connect to a network dialogue box opens.



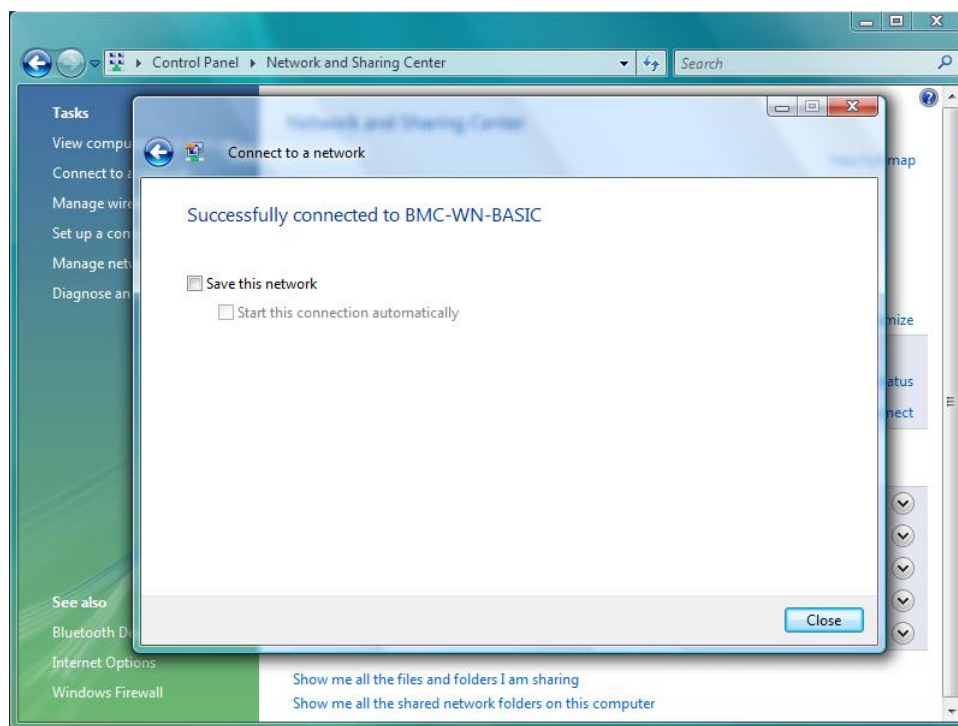
BMC-WN-BASIC will be listed, highlight it and click *connect*. You will be prompted that BMC-WN-BASIC is an unsecured network – Click *Connect Anyway*.



The Laptop will now connect to BMC-WN-BASIC.

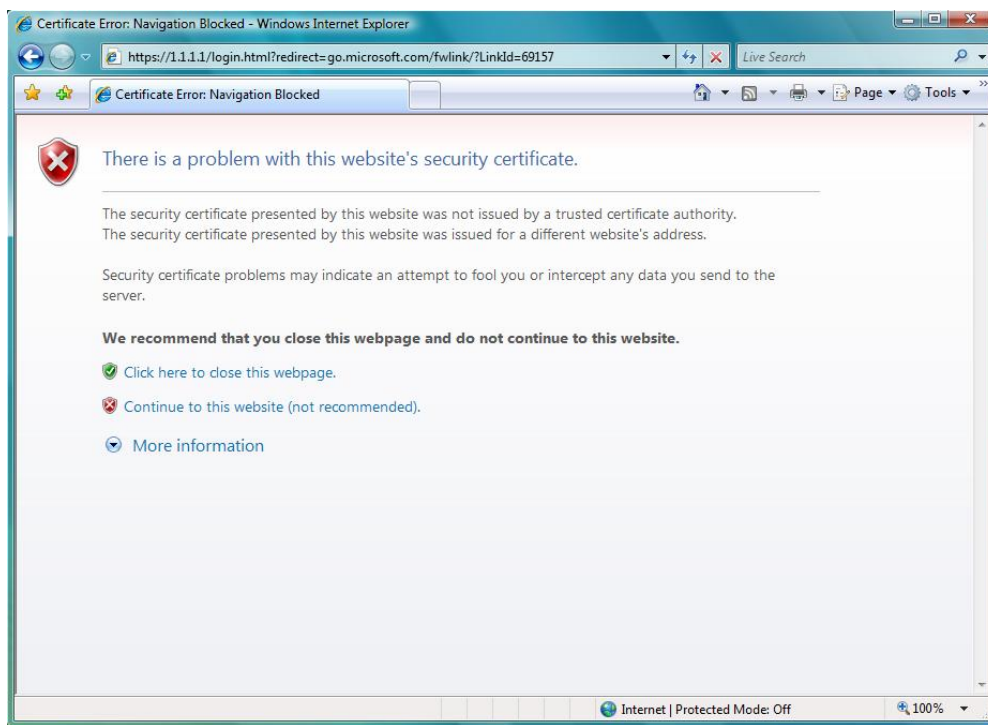


When the laptop has successfully connected the Dialogue box pictured below will appear.

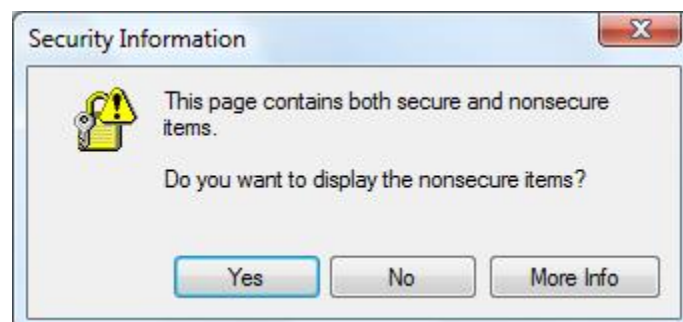


To avoid having to connect like this every time you bring your laptop into college click on *save this network connection* and *start this connection automatically*. Click Close. Your laptop will now connect automatically every time you are in college.


To start using the wireless network open Internet Explorer. If you are prompted about the website's security certificate click on *Continue to this website*.



You may also receive a security prompt click *yes*.




You will now be presented with the BMC-WN-BASIC login page.



## Belfast Metropolitan College

### Wireless Network - BMC-WN-BASIC



The Belfast Metropolitan College Wireless Network is only provided for use by College staff, students and authorised visitors.

You must have a current user account with Belfast Metropolitan College to access the Wireless Network. If you are an authorised Visitor, you must obtain a wireless user account via Learning Resource Centres or your staff contact.

**Please Read the Acceptable Usage Policy**

ICT Security Policy and Procedures - Summary.  
Belfast Metropolitan College provides computer access to local, national, and international sources of information, and encourages an atmosphere that supports the sharing of knowledge, the sharing of resources, and assists the creative process of learning.

Users accessing on-line resources must comply with the relevant licence agreements. Access is restricted to CURRENT staff, students and authorised guests.

You Must Agree to the terms of the Acceptable Usage Policy to use the BMC-WN-BASIC Wireless Network.

Please Enter Your User ID and password below.

Your username should be in the format BELFASTMET\username (for staff access) OR STUDENT\username (for student access). Visitors should type in the username and password they have been supplied (no prefix).

Then Click the submit button to use the Wireless Network.

User Name

Password

By clicking 'Submit' you are declaring that you agree to the terms and conditions set out in the Acceptable Usage Policy as detailed above.

The BMC Wireless Network Service is provided by IT Support Services, Department of Learning and Teaching Resources.

Wireless LAN support is provided via - [ithelpdesk@belfastmet.ac.uk](mailto:ithelpdesk@belfastmet.ac.uk)

Follow the onscreen instructions to authenticate.