

Wireless User Guide – Windows XP

IT Support Services

College Square East, Room A22k

Extension 5085

<http://www.belfastmet.ac.uk/wireless>

This document provides a description on how to setup your laptop to connect to Belfast Metropolitan College's wireless network "BMC-WN-BASIC".

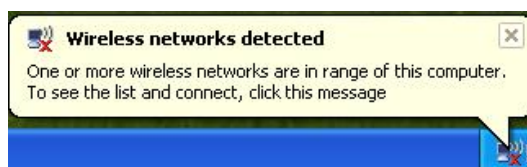
To connect to BMC-WN-BASIC you will need a laptop which meets the wireless requirements. Go to <http://www.belfastmet.ac.uk/wireless> for details.

Connecting to BMC-WN-BASIC

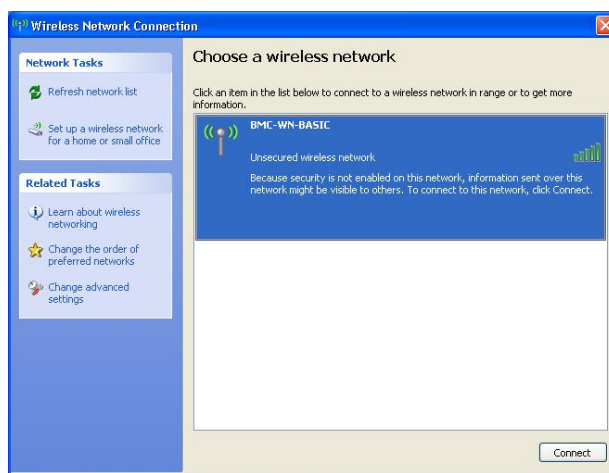
Ensure your wireless card radio is turned on.

Windows XP

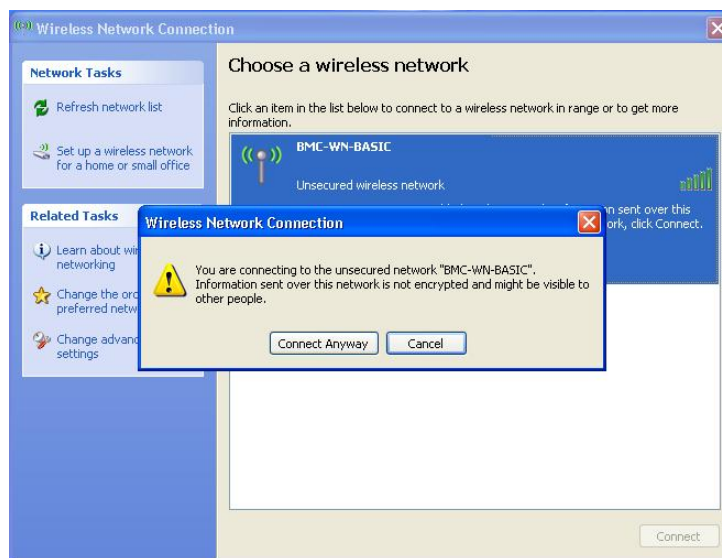
A balloon notification will appear beside your clock stating that wireless networks are available.



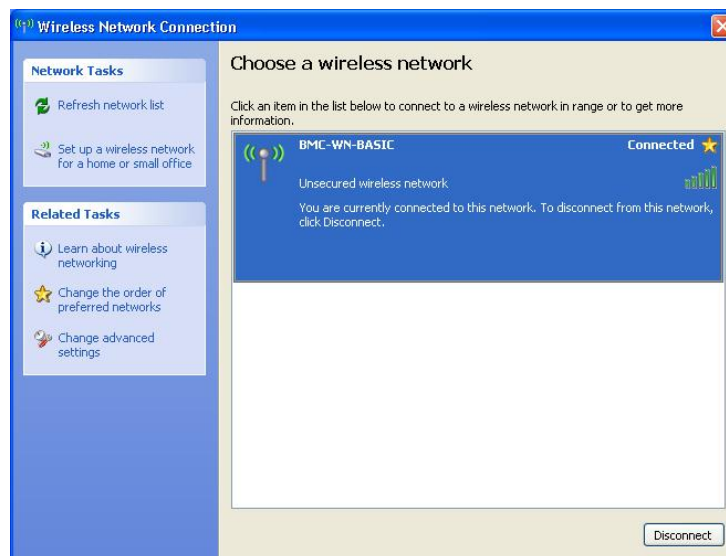
Click onto the balloon and the wireless network connection dialogue box will appear.



BMC-WN-BASIC will be listed, highlight it and click *connect*. You will be prompted that BMC-WN-BASIC is an unsecured network – Click *Connect Anyway*.




The Laptop will now connect to BMC-WN-BASIC.



Open Internet Explorer to start using wireless. You may receive a security prompt click *yes*.




You will now be presented with the BMC-WN-BASIC login page.



Belfast Metropolitan College

Wireless Network - BMC-WN-BASIC



The Belfast Metropolitan College Wireless Network is only provided for use by College staff, students and authorised visitors.

You must have a current user account with Belfast Metropolitan College to access the Wireless Network. If you are an authorised Visitor, you must obtain a wireless user account via Learning Resource Centres or your staff contact.

Please Read the Acceptable Usage Policy

ICT Security Policy and Procedures - Summary.
Belfast Metropolitan College provides computer access to local, national, and international sources of information, and encourages an atmosphere that supports the sharing of knowledge, the sharing of resources, and assists the creative process of learning.

Users accessing on-line resources must comply with the relevant licence agreements. Access is restricted to CURRENT staff, students and authorised guests.

You Must Agree to the terms of the Acceptable Usage Policy to use the BMC-WN-BASIC Wireless Network.

Please Enter Your User ID and password below.

Your username should be in the format BELFASTMET\username (for staff access) OR STUDENT\username (for student access). Visitors should type in the username and password they have been supplied (no prefix).

Then Click the submit button to use the Wireless Network.

User Name
Password

By clicking 'Submit' you are declaring that you agree to the terms and conditions set out in the Acceptable Usage Policy as detailed above.

The BMC Wireless Network Service is provided by IT Support Services, Department of Learning and Teaching Resources.
Wireless LAN support is provided via - ithelpdesk@belfastmet.ac.uk

Simply follow the onscreen instructions to authenticate.